



**Example Farm
{Recording Date}**

Current average herd recorded somatic cell count is 256 cells/ml

Key Points

Two in three cows that have been high at their first recording are actually a legacy of infections picked up during the latter half of their previous lactation.

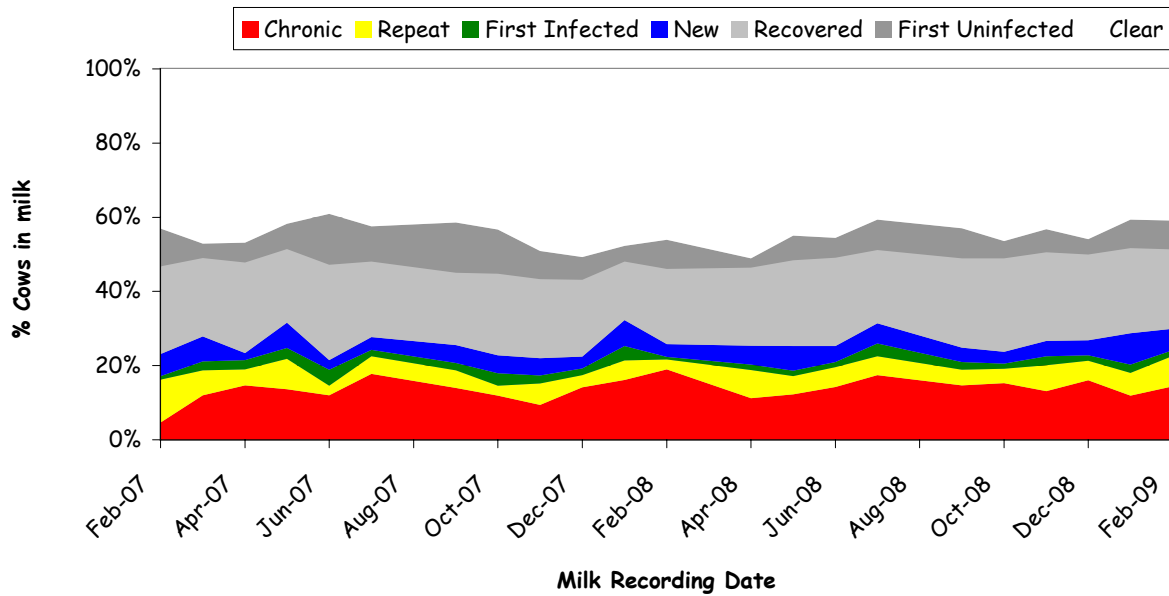
Cows: **499, 681, 53, 86, 652, 293, 119, 460, 1053 & 798** have been infected for six months or more. They are poor candidates for treatment during lactation and could be considered for treatment with an injectable at dry off in an attempt to augment antibiotic dry therapy.

Cows: **22, 147, 219, 922 & 874**, do not have long established infections and are the best candidates listed for treatment with tubes during lactation.

Although cows: **825, 262, 58 & 875**, are probably chronically infected, they do not have very long established infections. Treatment during lactation may still be worthwhile.

For further discussion contact the office or call your usual farm vet

SCC Status Summary



Date	Cows Milked	Herd SCC	%>200	Cows >200	New	First	Repeat	Chronic	First Uninfected	Recovered	Uninfected	First Infect. %	First Infect. ppn
03/02/2009	257	256	30%	77	15	4	21	37	20	55	105	17%	(4/24)
07/01/2009	261	172	29%	75	22	6	16	31	20	60	106	23%	(6/26)
04/12/2008	268	181	27%	72	11	4	14	43	11	62	123	27%	(4/15)
07/11/2008	289	190	27%	77	12	7	20	38	18	69	125	28%	(7/25)
06/10/2008	282	195	24%	67	9	4	11	43	13	71	131	24%	(4/17)
02/09/2008	286	146	25%	71	11	6	12	42	23	69	123	21%	(6/29)

Comment:

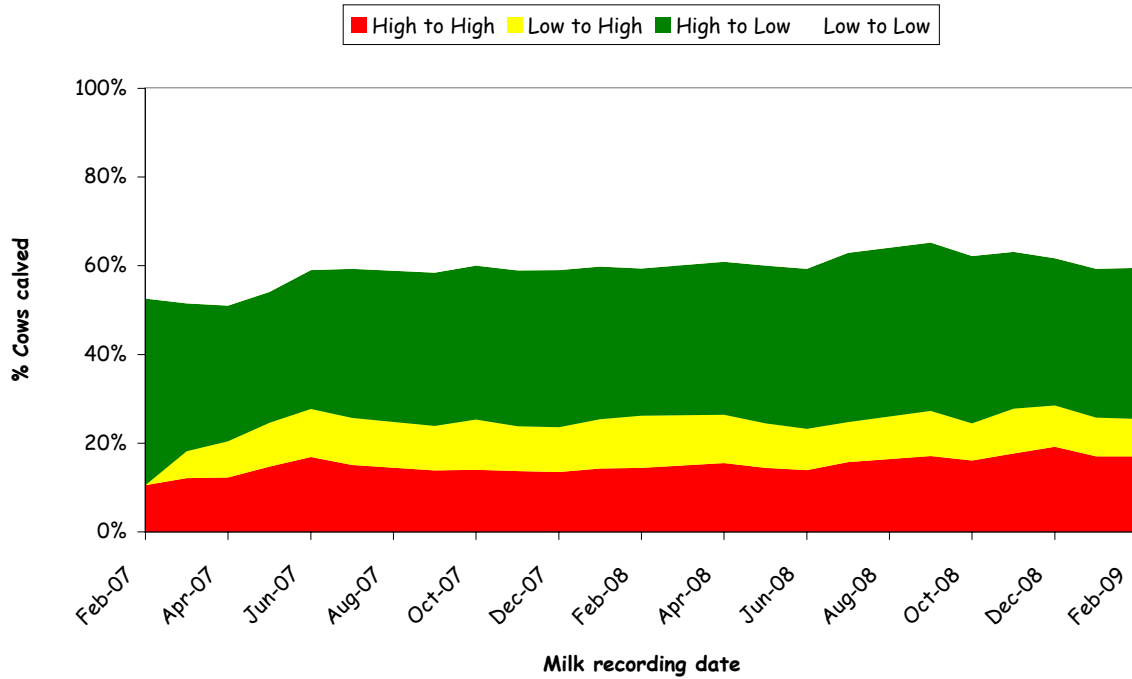
Unfortunately at the last recording nearly 1 in 3 cows were infected and 1 in 8 of these individuals now have a cell count of over 1 million.

The encouraging news this month is that less than 1 in 5 of the recently calved cows were infected at their first recording - this area is one to continue to focus on alongside the higher than desirable new infection rate.

It is interesting to note that new infection rate rises as lactation goes on. 2 in 3 cows that have been high at their first recording are actually a legacy of infections picked up during the latter half of their previous lactation.

The likely production impact of elevated cell counts on the recording day alone, based on a daily loss of 0.4kg in heifers and 0.6kg in cows for each 2 fold increase in SCC above 50,000cells/ml is 206kg (2.9% of total yield).

Dry Period Performance



Dry period performance of cows ending last lactation with LOW SCC status

Parity	Total	Start Low	% Start Low	Start High	% Start High
Heifers	-	-	-	-	-
2	63	53	84%	10	16%
3	19	18	95%	1	5%
4	8	5	63%	3	38%
>5	8	5	63%	3	38%
Total	98	81	83%	17	17%

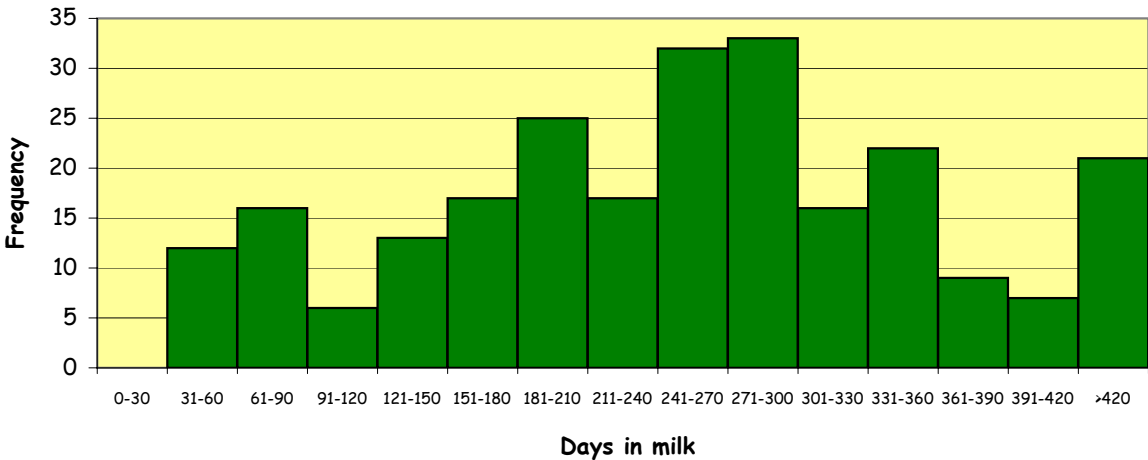
Dry period performance of cows ending last lactation with HIGH SCC status

Parity	Total	Start Low	% Start Low	Start High	% Start High
Heifers	-	-	-	-	-
2	22	18	82%	4	18%
3	27	16	59%	11	41%
4	24	17	71%	7	29%
>5	29	17	59%	12	41%
Total	102	68	67%	34	33%

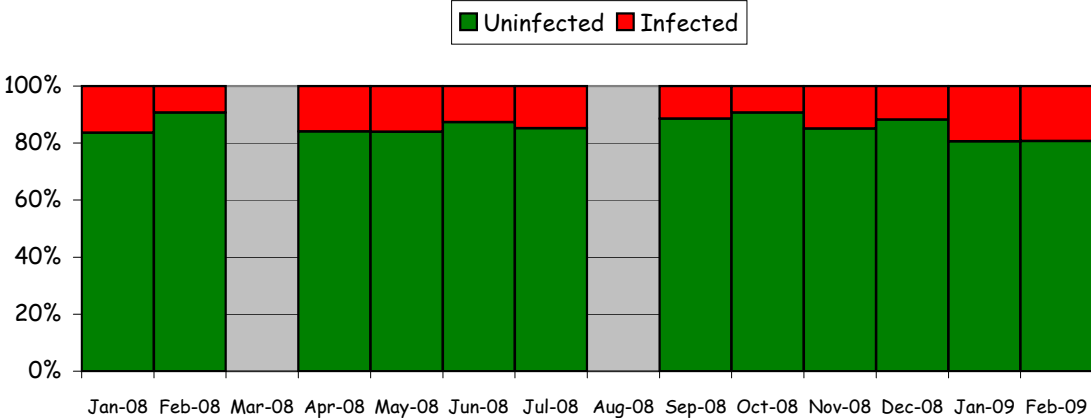
Comment:

Apparent cure rates in the half of the herd that are dried off after a high recording is a little disappointing. This is likely to be because a high proportion of these cows have been infected for over 3 months at this time.

Distribution of days in milk for new and true repeat infections over the past 12m



This month's fresh infections as a proportion of susceptible cows the previous month



Benchmarking

Infection profile of herd

Report month	% Milking Herd					% Firsts that are infected
	Infected	New	New & First	Repeat	Chronic	
Best	8%	1%	2%	0%	4%	0%
Worst	48%	9%	12%	12%	33%	50%
Mean	28%	5%	7%	5%	16%	22%
Your farm	30.0%	5.8%	7.4%	8.2%	14.4%	16.7%

6 month mean	% Milking Herd					% Firsts that are infected
	Infected	New	New & First	Repeat	Chronic	
Best	10%	3%	4%	1%	5%	2%
Worst	47%	8%	18%	8%	26%	43%
Mean	28%	5%	8%	4%	16%	22%
Your farm	26.7%	4.9%	6.8%	5.7%	14.2%	22.8%
Target	20%	4%	5%	5%	15%	15%
Intervention	30%	6%	7%	7%	18%	30%

Dry period performance

365 day totals	Dried Low	Dried High	Start High	% High at dry off	% High at dry off		Heifers starting high
	Start Low	Start Low	Legacy		High > 3m	High > 6m	
Best	98%	88%	20%	14%	23%	2%	5%
Worst	61%	48%	86%	71%	56%	30%	39%
Mean	79%	68%	53%	42%	40%	16%	19%
Your farm	82.7%	66.7%	66.7%	51.0%	46%	10%	14.3%
Target	90%	80%	30%	30%	20%	5%	10%
Intervention	80%	70%	50%	50%	30%	10%	20%

Cure rates

Proportion of infections cleared		
	New & Repeat	Firsts
Best	71%	71%
Worst	30%	28%
Mean	50%	52%
Your farm	55%	63%

(Resolution rate between new, true repeat and first infections and the subsequent recording)

Major bulk tank contributors

	% infected cows with SCC >1million cells	Chronic cow contribution to bulk SCC
Best	2%	18%
Worst	31%	71%
Mean	17%	43%
Your farm	16%	47%

League Tables

'NEWS'

% of herd 'new' over last 6 months

Your farm is currently in league division
2 out of 4

Rank	% 'News' over last 6 months
1st	4.7%
2nd	4.7%
3rd	4.8%
4th	4.8%
Your farm	4.9%
6th	5.1%
7th	5.2%
8th	5.2%
9th	5.2%
10th	5.4%

'FIRSTS'

% of recent calvers infected over last
6 months

Your farm is currently in league division
3 out of 4

Rank	% 'Firsts' over last 6 months
1st	21.1%
2nd	21.7%
Your farm	22.8%
4th	23.2%
5th	23.3%
6th	24.5%
7th	25.9%
8th	26.5%
9th	26.9%
10th	27.9%

APPARENT DRY PERIOD PREVENTION SUCCESS OVER LAST 12 MONTHS

Your farm is currently in league division
2 out of 4

Rank	% 'Low-Low' over last 12 months
1st	84.1%
2nd	84.0%
3rd	83.8%
4th	83.7%
5th	83.6%
6th	83.1%
Your farm	82.7%
8th	82.1%
9th	81.5%
10th	81.4%

APPARENT DRY PERIOD CURE SUCCESS RATE OVER LAST 12 MONTHS

Your farm is currently in league division
3 out of 4

Rank	% 'High-Low' over last 12 months
1st	68.3%
2nd	68.1%
3rd	67.9%
4th	67.7%
5th	67.6%
6th	67.4%
7th	66.7%
8th	66.7%
9th	66.7%
Your farm	66.7%

Cow Lists

Cows infected for the first time in the current lactation - "New"

Cows	SCC	Previous SCC	Parity	Days post partum	Times >200,000 in lactation	
					This	Previous
1318	2812	145	1	42	1/2	-
1153	1669	70	1	418	1/14	-
77	707	53	3	112	1/4	4/13
1289	413	120	1	233	1/8	-
941	364	16	2	242	1/8	0/9
518	343	23	4	123	1/4	2/13
381	327	148	7	276	1/9	4/12
551	316	130	3	350	1/12	3/11
1075	275	25	2	75	1/3	1/11
525	268	194	3	351	1/12	1/13
1290	260	126	1	168	1/6	-
848	235	31	2	387	1/13	0/13
1022	221	154	2	176	1/6	2/9
862	213	9	2	44	1/2	0/11
1276	212	40	1	201	1/7	-

Comment:

Most of these cows have been infected towards the end of their lactation and hardly any were much of a problem during their previous lactation. At this stage no action is recommended although any that are high next month should be treated.

Cows infected on the first recording of the current lactation - "First"

Cows	SCC	Previous SCC	Parity	Days post partum	Times >200,000 in lactation	
					This	Previous
512	6268	919	7	11	1/1	2/11
336	1811	655	8	27	1/1	11/12
1031	472	89	2	5	1/1	1/13
664	201	91	4	27	1/1	0/9

Comment:

Cows **512 & 336** were high at dry off so have either failed to clear over the dry period or have recently acquired a new infection. If they do not respond to early treatment their future in the herd should be considered.

Cows infected more than once in this lactation - "Repeats"

Cows	SCC	Previous SCC	Parity	Days post partum	Times >200,000 in lactation		Consec lows
					This	Previous	
668	2690	171	3	423	4/13	0/8	1
1263	848	42	1	228	2/8	-	6
855	781	89	2	297	3/10	0/9	1
653	548	115	3	170	5/6	6/8	1
825	363	17	2	445	2/15	2/11	1
615	360	2	3	228	5/8	8/12	1
794	343	168	2	493	7/17	1/12	1
940	337	15	1	541	3/18	-	1
501	327	71	4	339	2/11	2/10	3
893	306	19	1	377	7/13	-	2
154	294	192	4	192	2/7	6/9	5
783	294	92	3	224	5/8	1/9	1
262	267	142	6	335	2/11	6/13	1
71	263	98	1	615	2/21	-	3
818	261	172	2	286	2/10	3/14	8
58	255	124	2	294	2/10	0/9	1
875	255	0	2	238	2/8	2/13	1
933	234	78	1	574	3/19	-	1
1260	226	68	1	215	3/7	-	1
643	219	88	3	251	2/9	4/11	7
1002	201	24	1	540	3/18	-	6

Comment:

Cows: **668, 825, 794, 940, 71, 933 & 1002**, are more than 400 days in milk and may be candidates for early dry off.

Of these cows: **668, 794, 940 & 933**, gave less than 10 litres of milk on recording day. It is strongly advised that they are dried off.

Cows: **1263, 501, 154, 71, 818, 643 & 1002**, are probably true repeat infections (i.e. cows that have good evidence of having cleared their previous infection completely) and are good candidates for treatment with tubes during lactation.

Cows: **668, 855, 653, 615, 794, 940, 893, 783, 933 & 1260**, are possibly chronically infected cows that didn't shed a high number of cells during the last couple of recordings. They may therefore be poor candidates for treatment during lactation.

Although cows: **825, 262, 58 & 875** are probably chronically infected, they do not have very long established infections. Treatment during lactation may still be worthwhile.

Chronically infected cows

Cows	SCC	Previous SCC	Parity	Days post partum	Times >200,000 in lactation		Type	Consec highs	1st High
					This	Previous			
1197	6530	425	1	293	5/10	-	Repeat	2	425
660	5246	251	3	217	4/7	3/15	Repeat	2	251
492	4886	593	5	279	5/10	9/10	Repeat	4	206
437	2799	830	4	76	2/2	11/13	First	2	830
186	1694	719	6	110	4/4	5/8	First	4	880
499	1386	1150	4	284	8/10	5/9	New	8	472
22	1007	210	5	203	2/6	6/11	New	2	210
380	962	936	4	61	2/2	3/13	First	2	936
504	800	579	6	109	3/4	2/9	Repeat	2	579
461	730	432	7	155	5/5	4/10	First	5	1765
681	682	206	3	298	7/9	7/11	New	7	680
53	661	1000	3	500	13/17	7/13	New	13	214
86	643	967	11	222	7/8	9/11	New	7	435
593	622	1079	7	69	3/3	10/11	First	3	619
652	577	286	2	258	7/8	12/13	Repeat	6	207
854	550	327	2	287	3/10	0/11	Repeat	2	327
50	536	449	4	198	5/7	5/8	New	5	258
293	508	488	4	490	13/15	7/13	Repeat	9	915
147	494	342	5	234	2/8	2/11	New	2	342
119	433	220	6	396	14/14	9/13	First	14	208
91	423	232	2	264	4/9	3/8	Repeat	3	432
219	411	546	5	291	2/10	4/13	New	2	546
788	392	294	3	164	4/6	2/12	Repeat	3	313
38	389	355	5	90	3/3	5/9	First	3	560
460	387	303	4	262	6/7	2/7	New	6	1389
1080	382	230	1	492	5/17	-	Repeat	4	218
1204	381	276	1	212	4/7	-	Repeat	2	276
732	361	1086	3	267	3/7	1/12	Repeat	2	1086
922	356	258	2	158	2/6	0/12	New	2	258
67	350	441	3	415	3/14	6/14	Repeat	2	441
465	329	235	3	490	5/13	2/13	Repeat	4	256
1013	258	1024	2	91	3/3	0/12	First	3	4030
874	251	1398	2	183	2/6	3/13	New	2	1398
1053	245	1130	1	444	8/13	-	Repeat	6	326
1271	237	262	1	172	3/6	-	New	3	309
798	222	426	3	171	6/6	0/10	First	6	1105
1154	209	267	2	116	4/4	0/10	First	4	953

Comment:

Cows: **53, 293, 1080, 67, 465 & 1053**, are more than 400 days in milk and may be candidates for early dry off.

Of these cows: **293, 67 & 465** gave less than 10 litres of milk on recording day. Drying-off these low yielding, chronically infected cows is strongly advised.

Cows: **499, 681, 53, 86, 652, 293, 119, 460, 1053 & 798**, have been infected for six months or more. They are poor candidates for treatment during lactation and could be considered for treatment with an injectable at dry off in an attempt to augment antibiotic dry therapy.

Cows: **22, 147, 219, 922 & 874** do not have long established infections and are the best candidates listed for treatment with tubes during lactation. Younger cows and cows with more moderate cell counts represent the best prospects in this group.



- **Treating clinical mastitis in the first 100 days effectively will reduce the chances of recurring infections later in the lactation**
- **A case of mastitis reduces lactation by around 5%, a second case will knock it back by another 5% and any more will do the same**
- **In cases of *E.coli* mastitis, treating with Cobactan® MC and Cobactan® 2.5% injectable has been shown to deliver better cure rates than tubes alone**
- **The start of housing always increases the risk of clinical cases of mastitis and can lead to raised cell counts – pay particular attention to hygiene, bedding and parlour routine**

Action Feedback Sheet

This sheet may be faxed back to the Practice to indicate what actions have been taken with highlighted cows.

Cow	Action to be taken	Date done/reason not done
668	Repeat giving <10l - dry off.	
794	Repeat giving <10l - dry off.	
940	Repeat giving <10l - dry off.	
933	Repeat giving <10l - dry off.	
293	Chronic giving <10l - dry off.	
67	Chronic giving <10l - dry off.	
465	Chronic giving <10l - dry off.	
22	Recent chronic - treat with tubes.	
147	Recent chronic - treat with tubes.	
219	Recent chronic - treat with tubes.	
922	Recent chronic - treat with tubes.	
874	Recent chronic - treat with tubes.	
825	Recent chronic - treat with tubes.	
262	Recent chronic - treat with tubes.	
58	Recent chronic - treat with tubes.	
875	Recent chronic - treat with tubes.	
512	Treat with tubes. If no response, cull.	
336	Treat with tubes. If no response, cull.	
499	Chronic >6m - inject at dry off.	
681	Chronic >6m - inject at dry off.	
53	Chronic >6m - inject at dry off.	
86	Chronic >6m - inject at dry off.	
652	Chronic >6m - inject at dry off.	
293	Chronic >6m - inject at dry off.	
119	Chronic >6m - inject at dry off.	
460	Chronic >6m - inject at dry off.	
1053	Chronic >6m - inject at dry off.	
798	Chronic >6m - inject at dry off.	